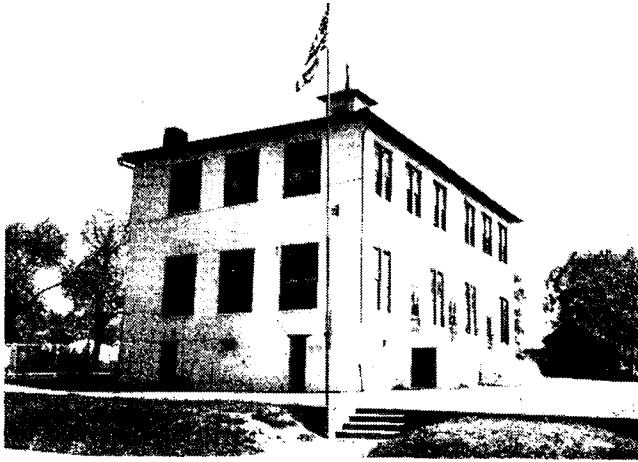


SCHOOL YEARS 1900 to 1910

FIRST DECADE FACTS:

- The first public school building was a 2-story 47 X 50 ft. building on the corner of 2nd and Main Street, Slatington in 1868.
- Two additions to the aforementioned building were built in 1879 and 1883.
- Supervising Principals: 1883-1888 Professor Stettler; 1888-1889 Professor W. R. McCloskey; 1889-1896 Professor J. J. Savitz;; 1896: Professor J. W. Snyder (age 32).
- Thw Walnutport Whitehouse Elementary was constructed in 1870.
- In 1890, a one-room Grammar A School was located on Fairview Ave. in Slatington which also housed 34 high school students. (Stanwood Mills site)
- Due to overcrowded conditions, a new Primary and High School Building was built in 1897 and named the Lincoln Building.
- The first Graduating Class of Slatington High School was held in 1890 - The Class of 1890 had 4 graduates: Alberta Fox, Eliza Morgan, John N. Bachman, & Irvin P. Dorward.
- Slatington High School students consisted of students from Walnutport, Lehigh Township (Walnutport School District); Washington, Lynn and Heidelberg Townships; and the Borough of Slatington (Slatington School District).
- Athletics were first introduced to Slatington students in 1905.
- The Franklin School House was constructed in Emerald, PA in 1905.
- The first athletic team to be introduced was Boys Basketball in 1906.
- Our School Colors of Blue & White were chosen in 1906.
- The Roosevelt Elementary School was constructed in 1906, now our newly renovated Slatington Borough Hall.
- School Plays were first introduced in 1907.
- The first piano was purchased in 1907.
- Baseball was introduced in 1907.
- And the first musical unit, an orchestra, was organized in 1910.



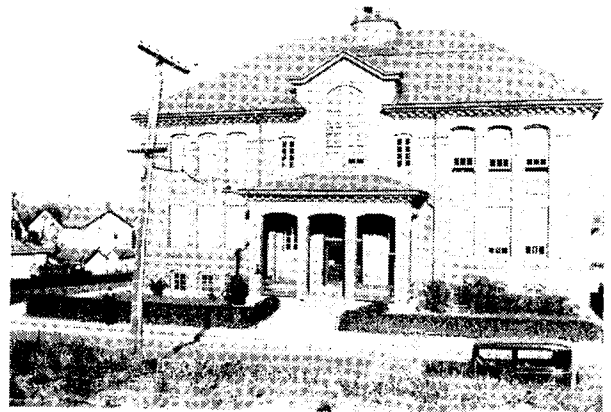
The Whitehouse Elementary School, Walnutport, PA – 1870



The Franklin School, Emerald, PA - 1905



The Lincoln Building, Slatington, PA – 1897 & 1918



The Roosevelt Building, Slatington PA - 1906