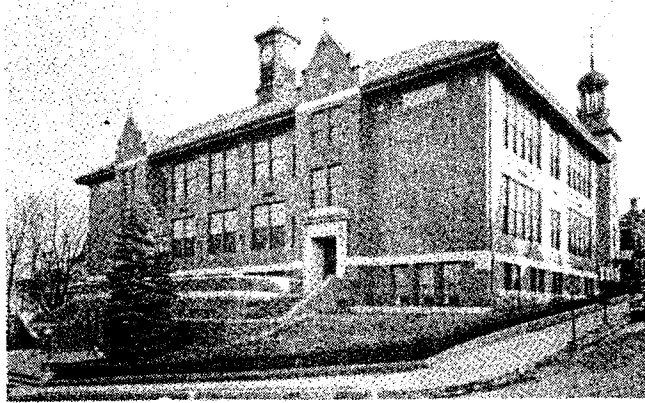


# SCHOOL YEARS 1911 to 1920

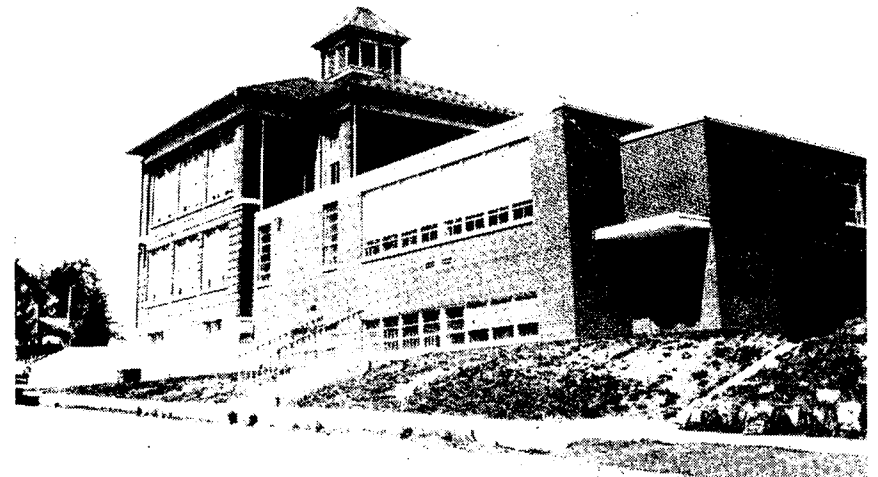
## **SECOND DECADE FACTS:**

- The Slatedale Elementary School was constructed in 1911-12 in the village of Slatedale, PA., Washington Township School District.
- First high school electric clock and bell system was purchased by the Class of 1914.
- Original high school Tower Clock was purchased by the Class of 1915.
- Public voted to construct another High School, presently located on Main Street in Slatington, PA.
- New High School was constructed at the corner of 2<sup>nd</sup> & Main Street in 1916.
- Fire completely destroyed the Lincoln Building in February of 1917.
- Girls Basketball was organized in 1917.
- Construction of the new Lincoln Building was completed in 1918.
- Track was introduced in 1918.
- The words to our present Alma Mater were penned by Mr. Charles Schoffstall, a Commercial Teacher at Slatington between 1917 and 1920.
- Graduates in 1911 numbered 15 and 39 graduates by 1920.
- NORMAN ELWOOD SMITH for which Smith Hall was named, graduated in 1914 from SHS.
- Supervising Principal: Prof. J. W. Snyder



At Left: Old High School, 2<sup>nd</sup> & Main Streets, Slatington, PA. – 1916. It later became known as Slatington Junior High School.

Below: Slatedale Elementary School, Grant Street, Slatedale, PA. - 1911-12 and an addition in 1954.



## **SLATINGTON HIGH SCHOOL ALMA MATER**

Just above the winding Lehigh  
Midst the mountains grand,  
Stands our dear old Alma Mater  
Famed throughout the land.

Far and wide though we may sojourn,  
Still our hearts are true  
To our dear old Alma Mater,  
Dear old white and blue.

### **Chorus:**

High school, high school, our own high school,  
Dear old S.H.S.

When afar from thee we wander,  
Thy dear name we'll bless.